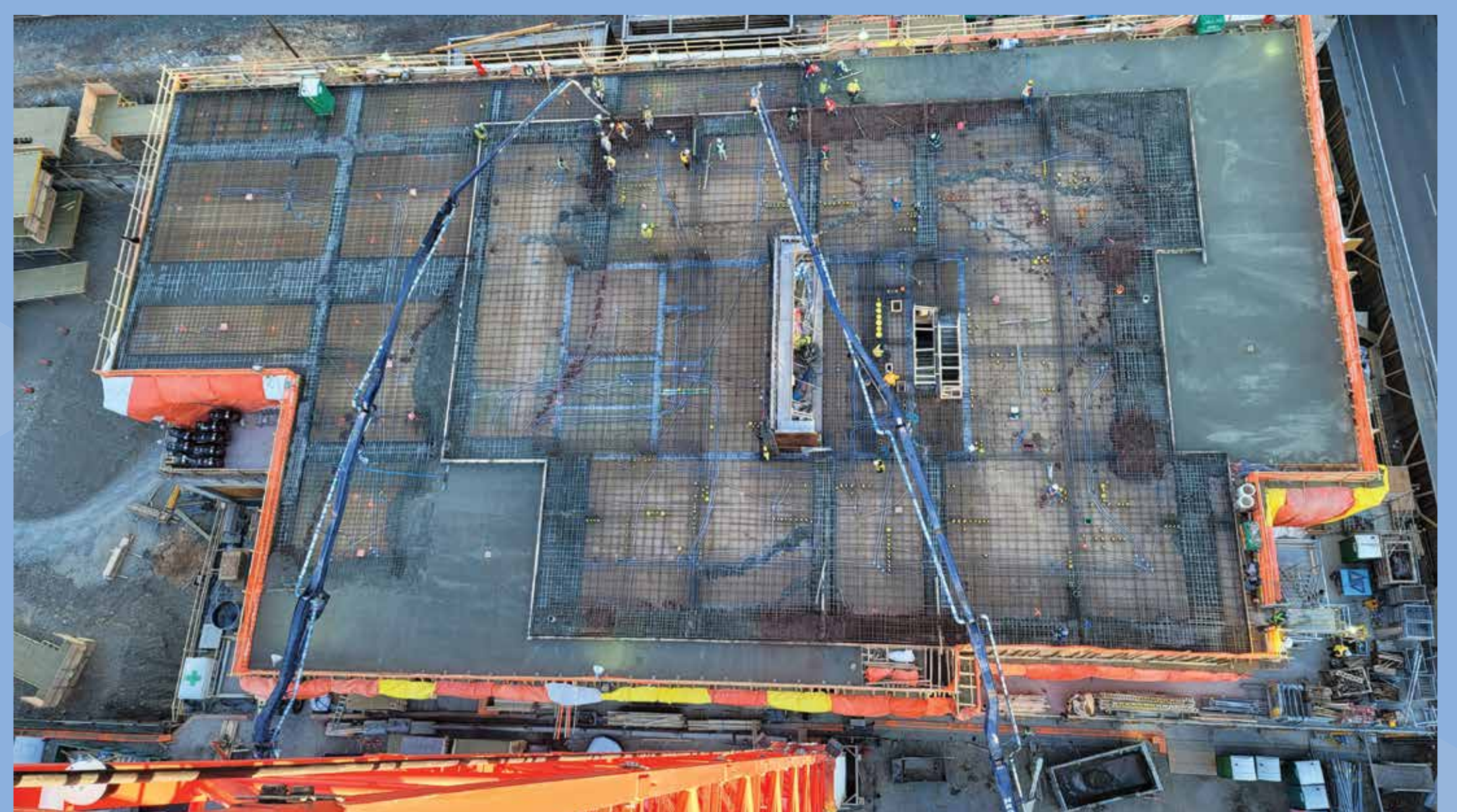
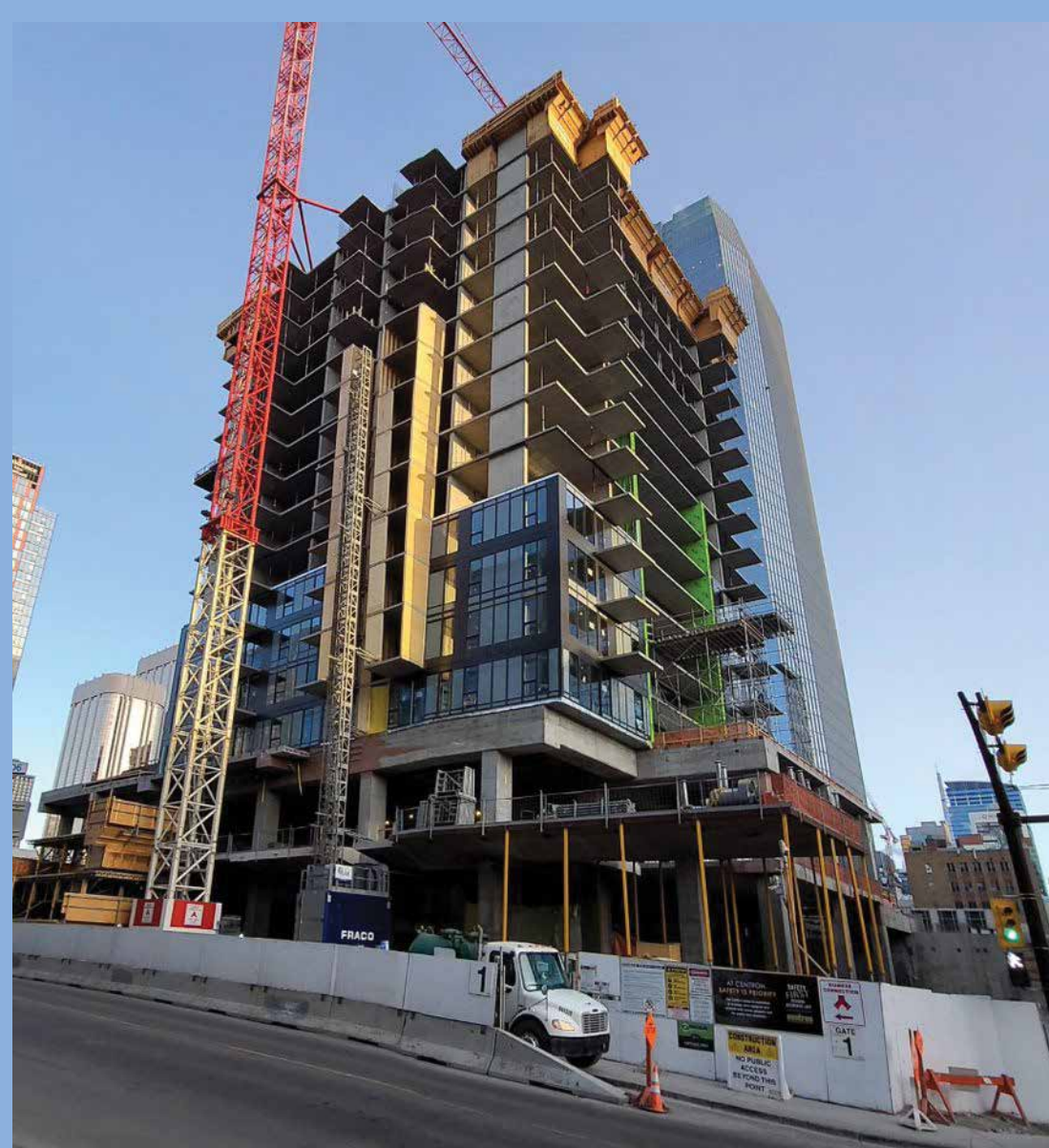
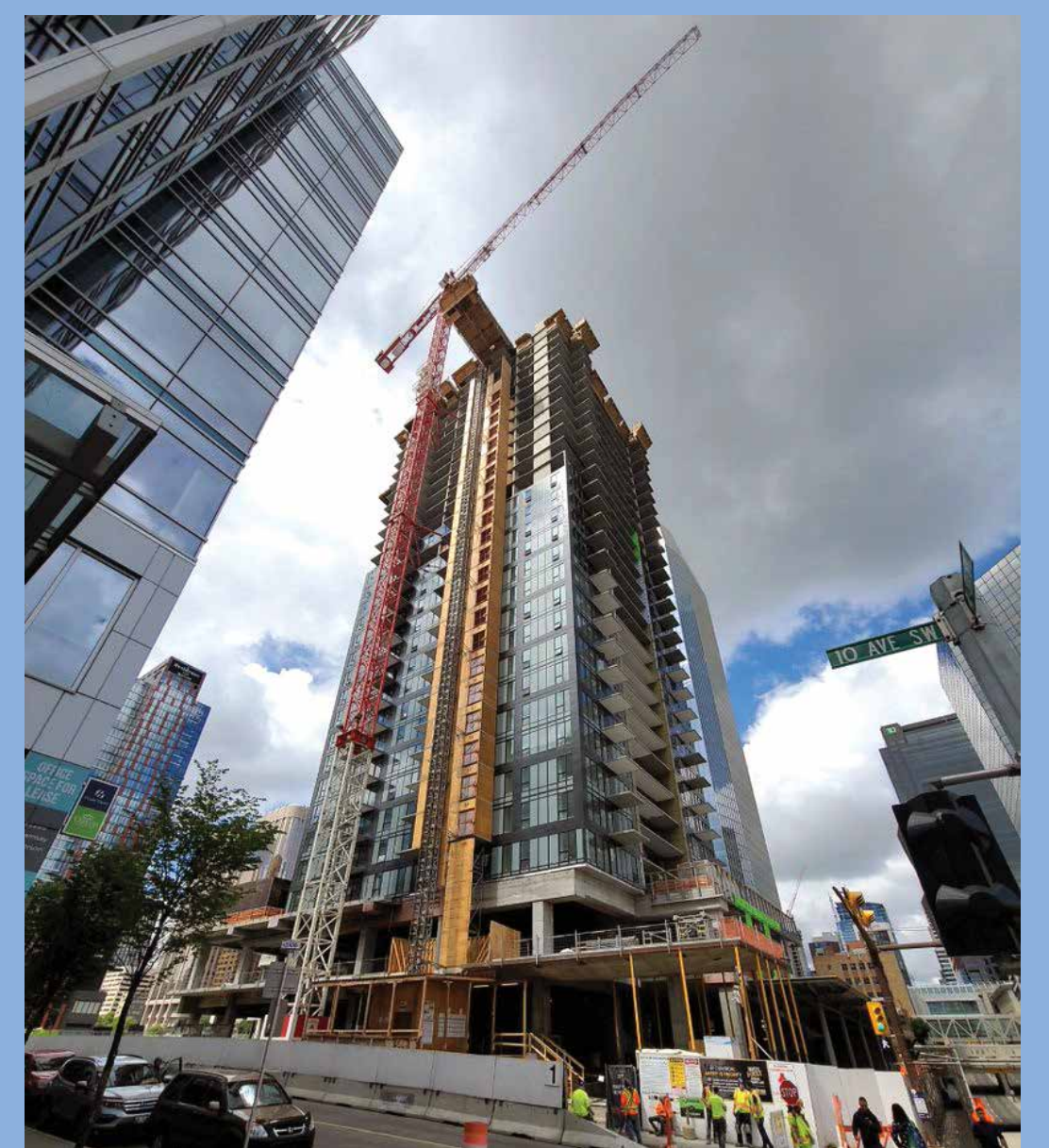


2022 Awards of

EXCELLENCE in Concrete

Place 10 East Residential

CATEGORY:	Buildings
OWNER:	Centron Group of Companies
ARCHITECT:	Gibbs Gage Architects
ENGINEER:	RJC Engineers
GENERAL CONTRACTOR:	Centron Group of Companies
CONCRETE SUPPLIER:	Inland Concrete
FORMWORK / CEMENT FINISHING CONTRACTOR:	New-Firmus Inc.
REINFORCING STEEL SUPPLIER / INSTALLER:	Harris Rebar



Alberta Chapter
American Concrete Institute
Always advancing